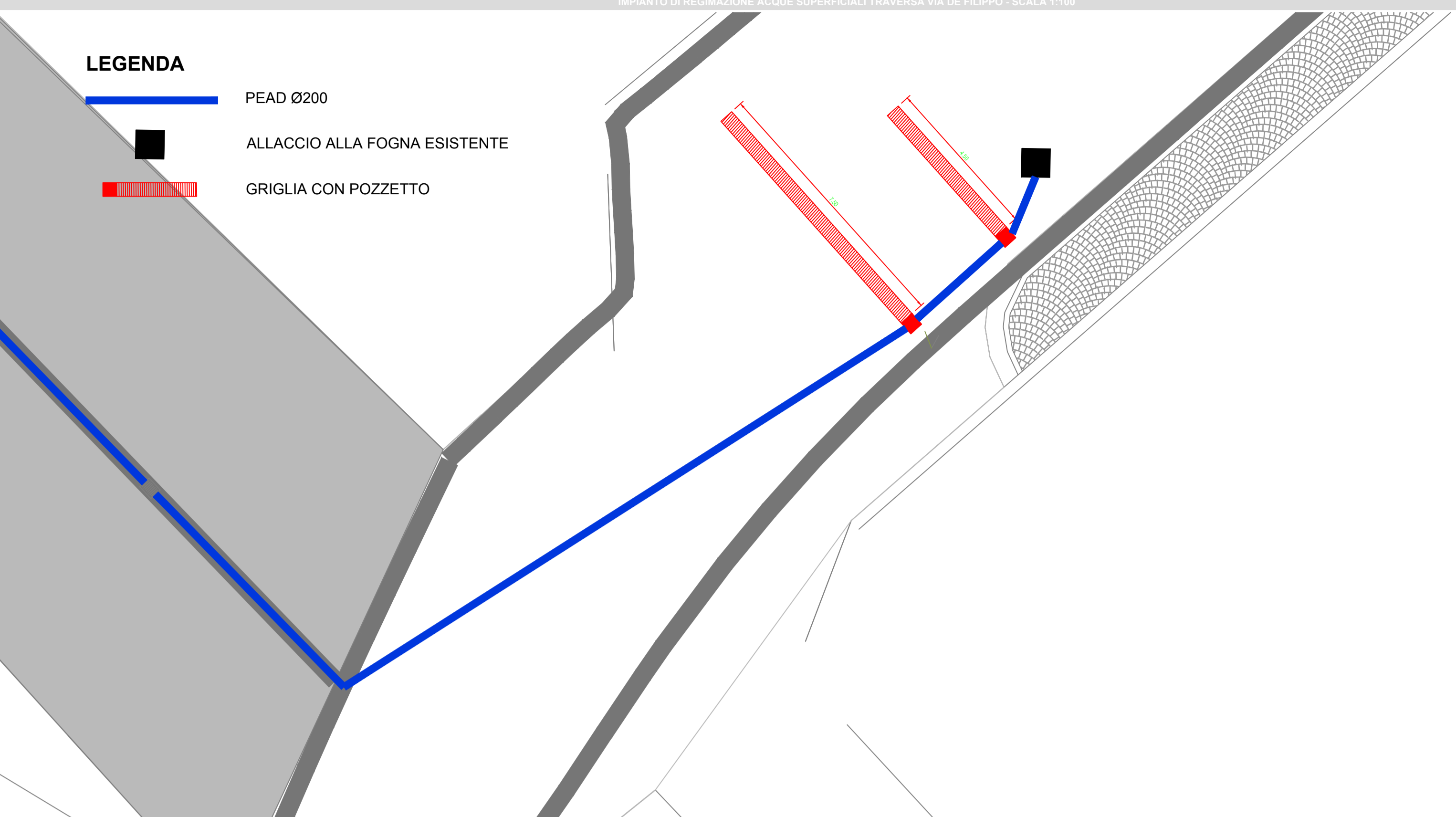


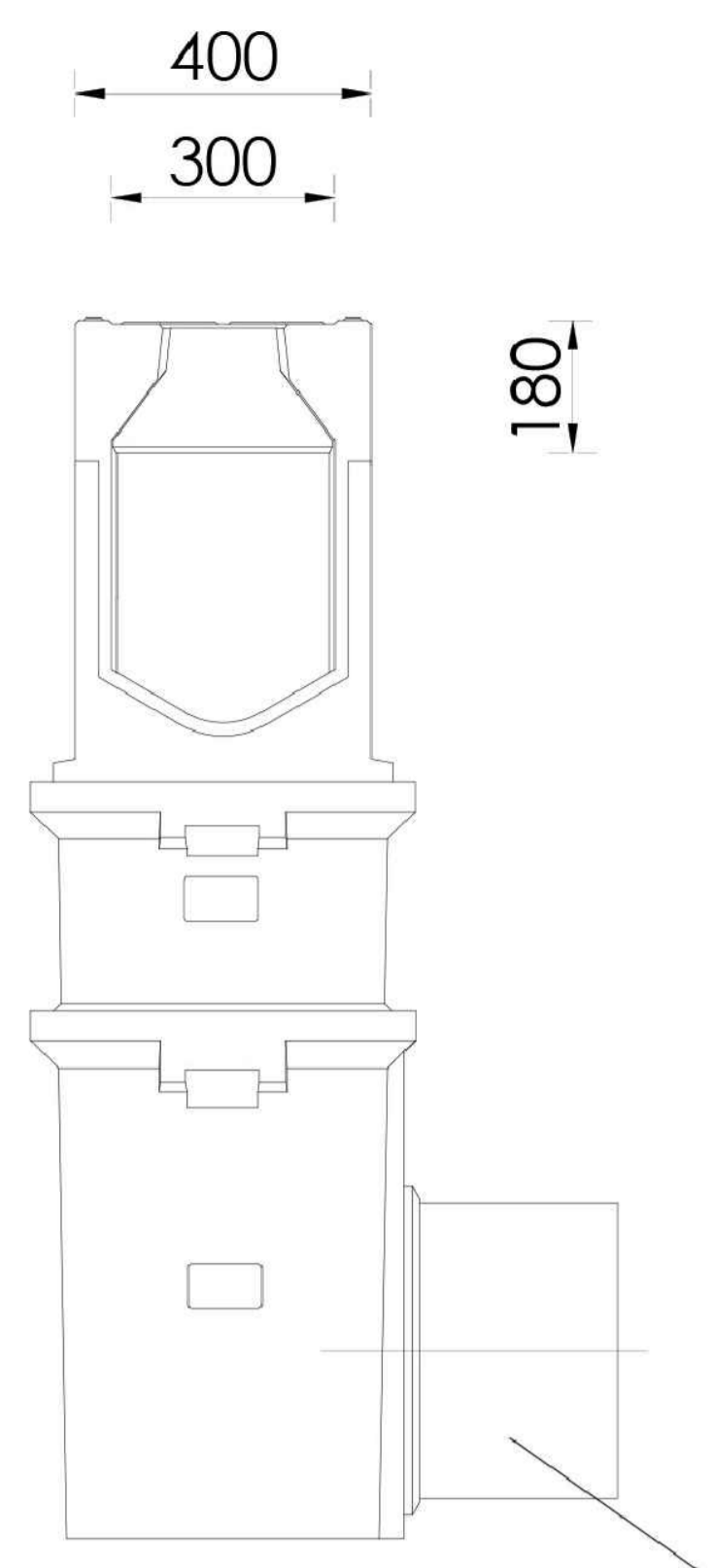
IMPIANTO DI REGIMAZIONE ACQUE SUPERFICIALI TRAVERSA VIA DE FILIPPO - SCALA 1:100

**LEGENDA**

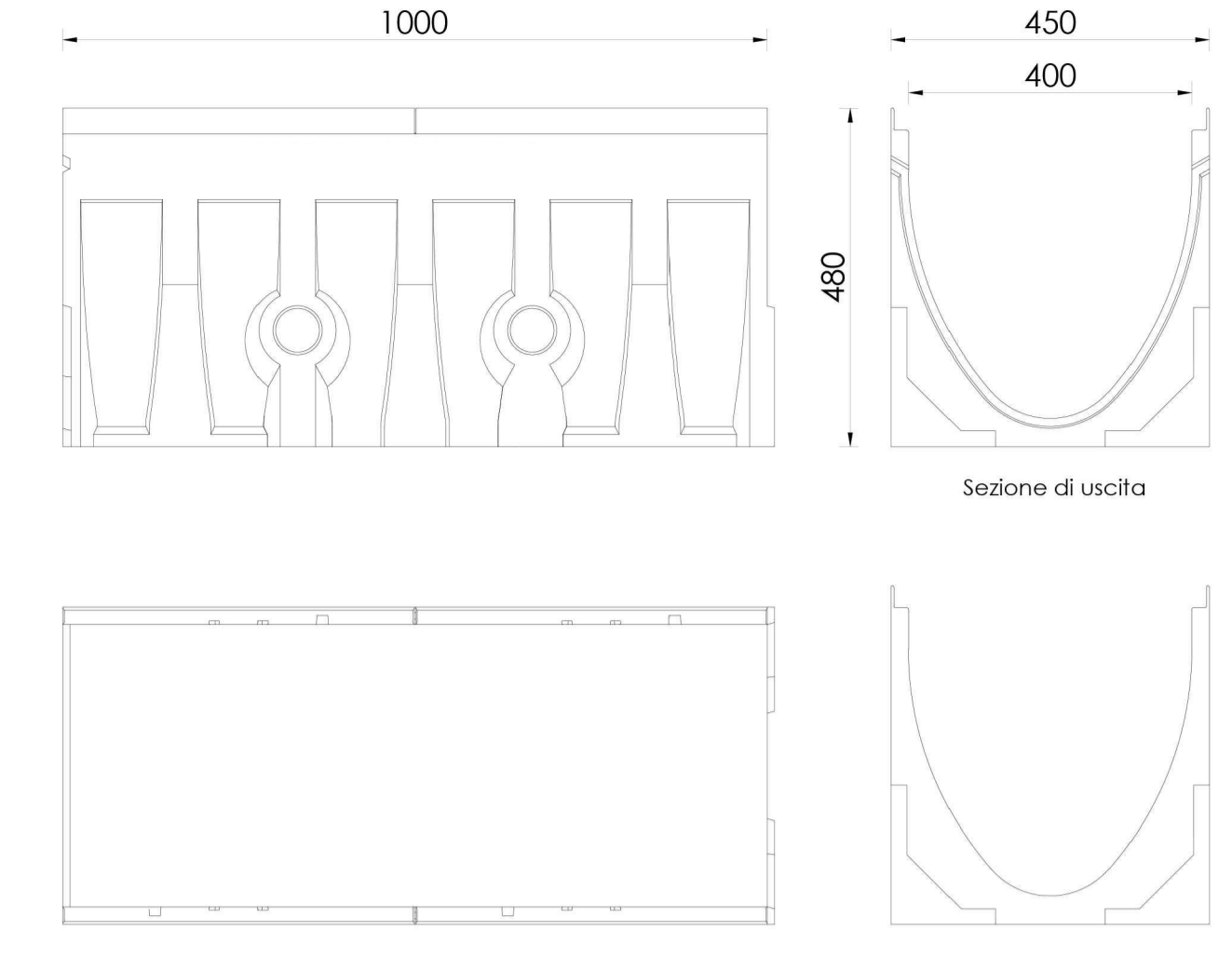
- PEAD Ø200
- ALLACCIO ALLA FOGNA ESISTENTE
- GRIGLIA CON POZZETTO



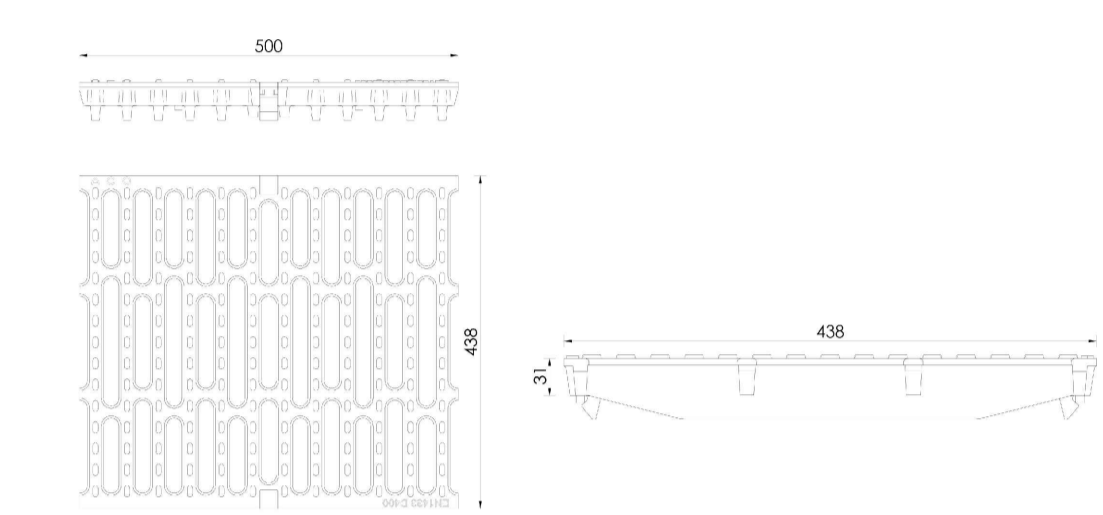
PARTICOLARE POZZETTO SCALA 1:10



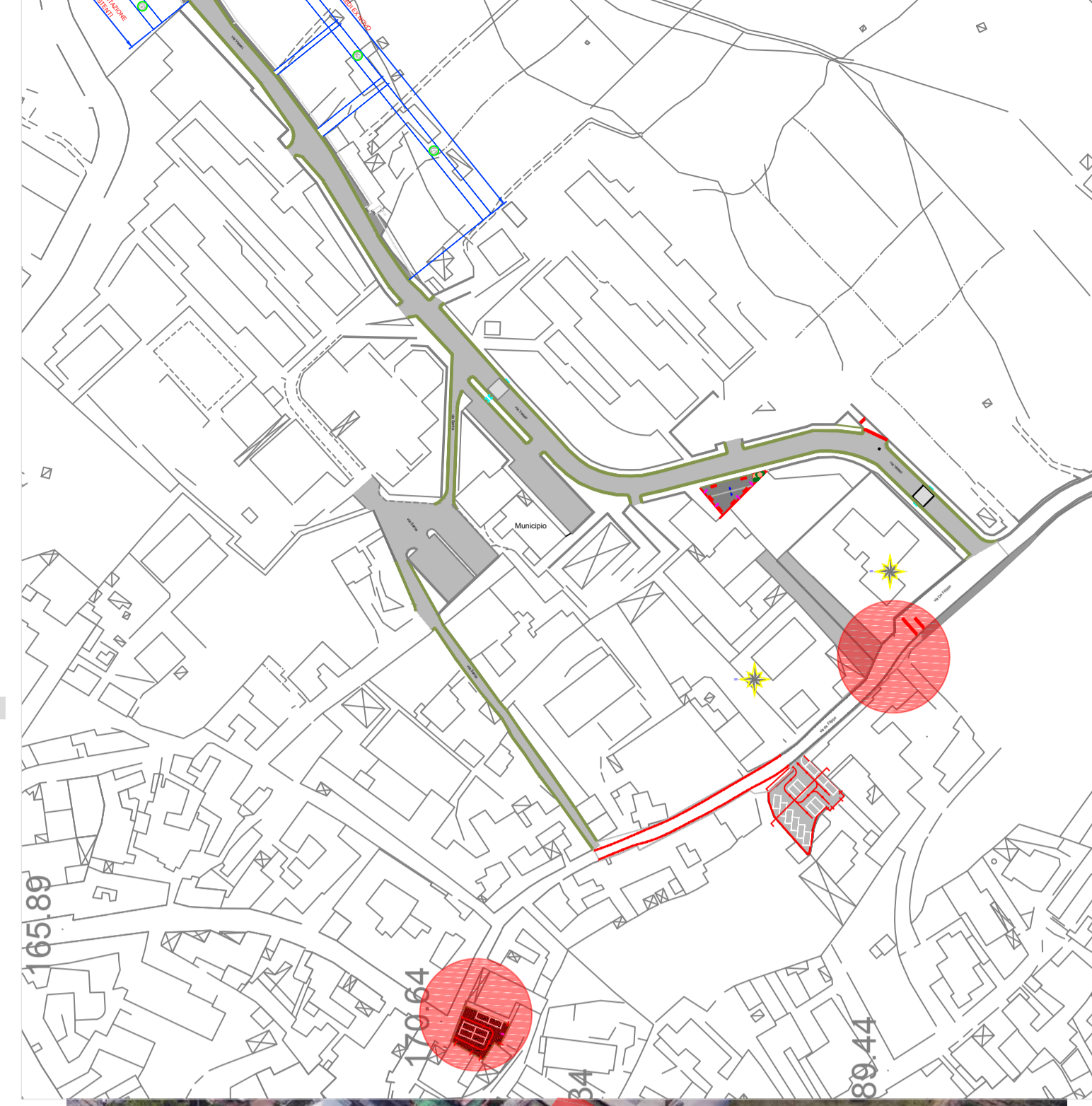
PARTICOLARE CANALE GRIGLIA SCALA 1:10



PARTICOLARE GRIGLIA SCALA 1:10

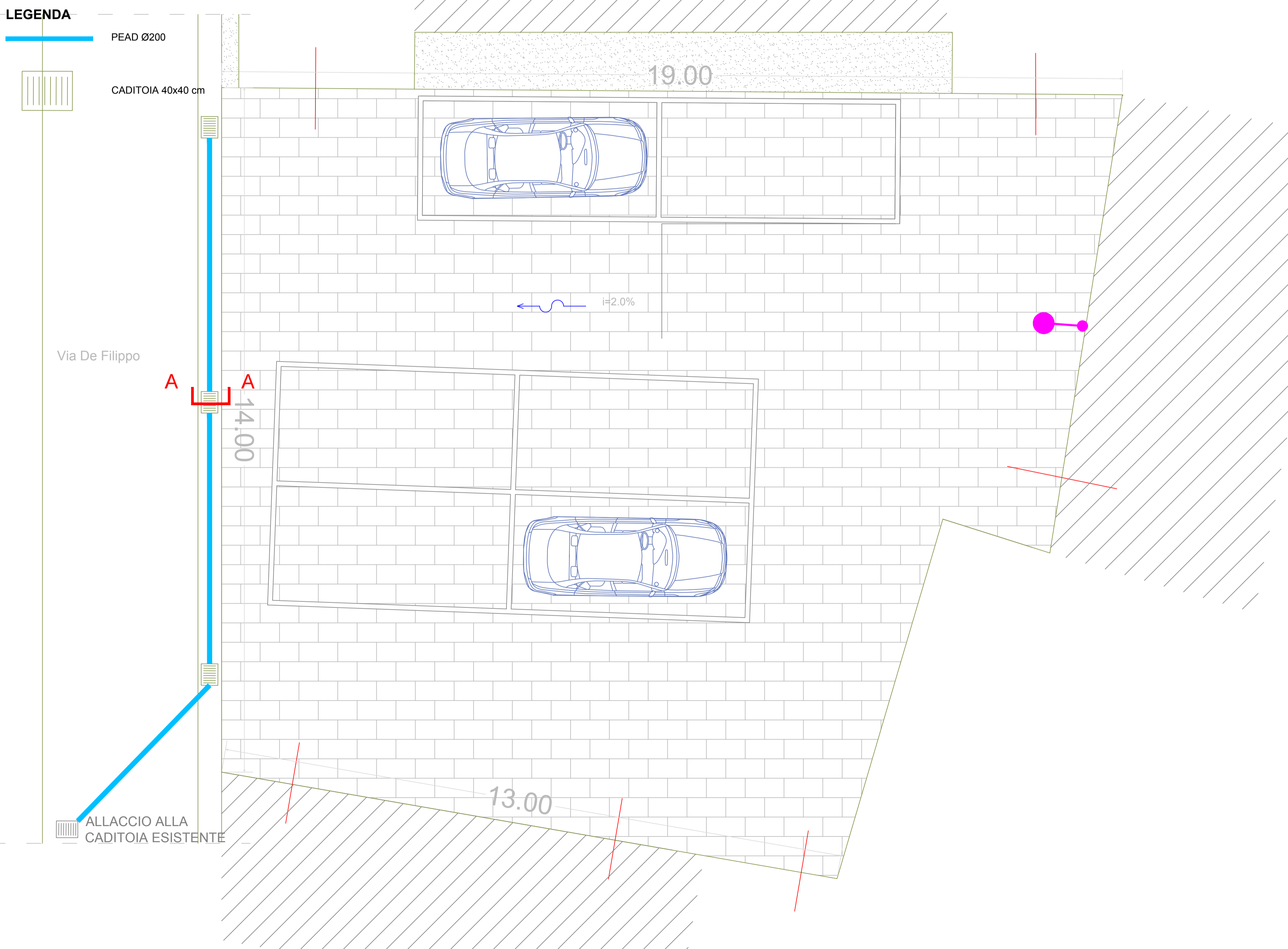


**KEY PLAN**

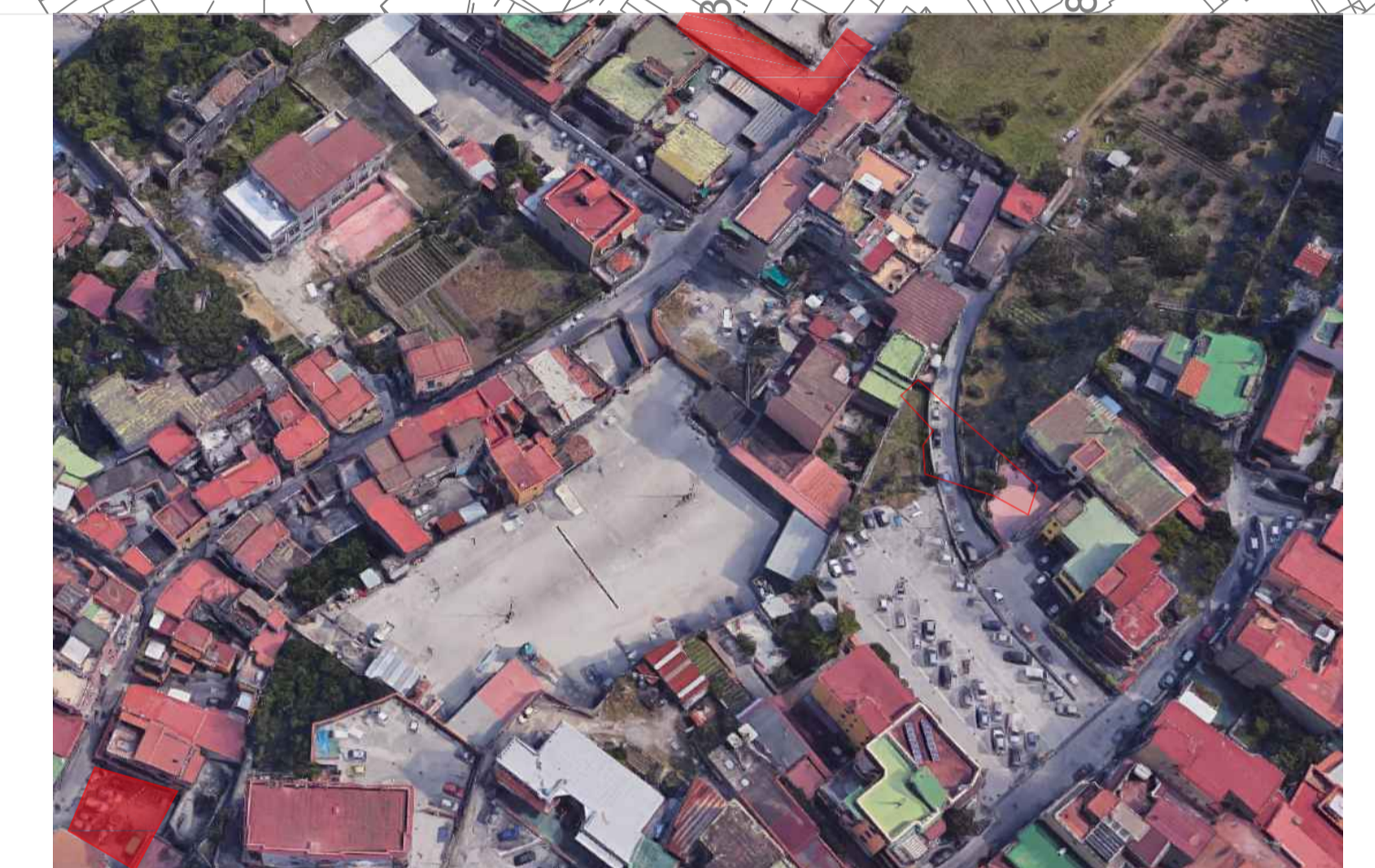
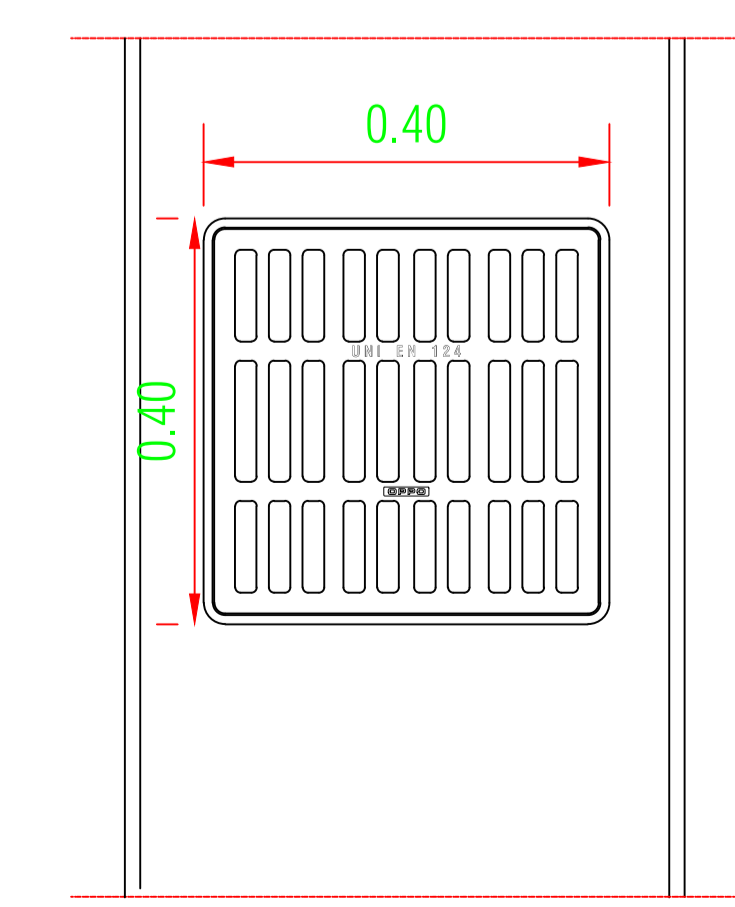
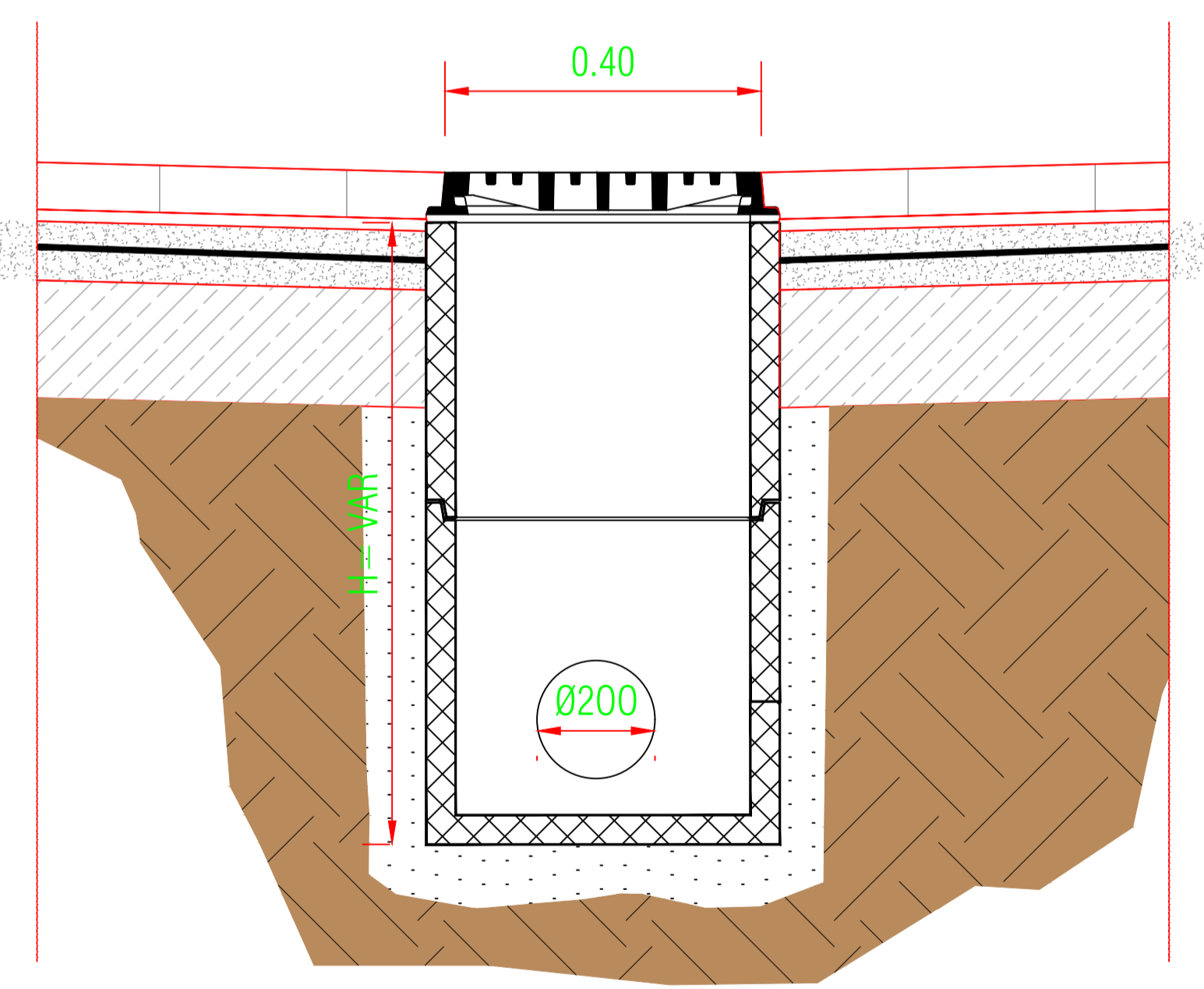


**LEGENDA**

- PEAD Ø200
- CADITOIA 40x40 cm



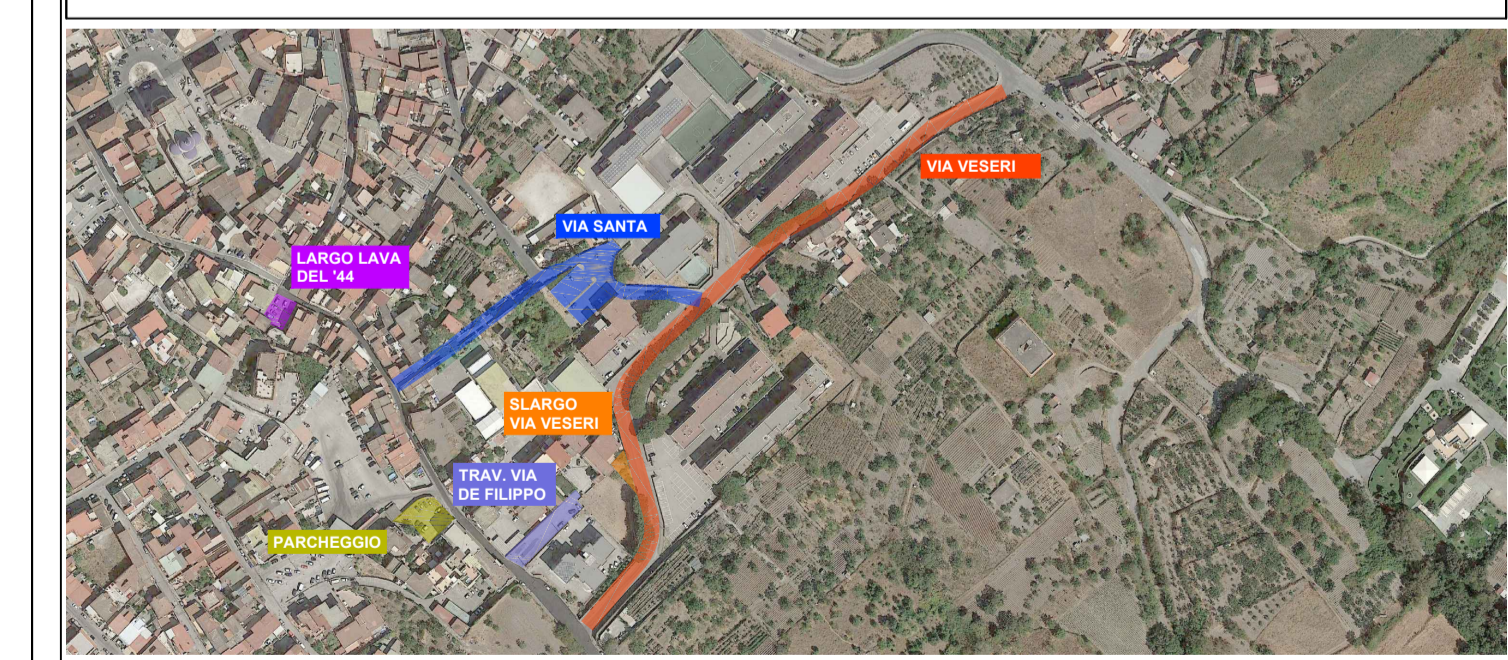
PARTICOLARE CADITOIA SEZIONE A-A SCALA 1:20





**COMUNE DI MASSA DI SOMMA**  
 Città Metropolitana di Napoli  
 "COMUNE DEL POMODORINO DEL PIENNOLO DEL VESUVIO D.O.P."

RIQUALIFICAZIONE TRATTO STRADALE VIA VESERI - VIA DE FILIPPO

**PROGETTO ESECUTIVO**



Progettista:  S&S  
 Responsabile del Procedimento:

IMPIANTO REGIMAZIONE ACQUE		Codice elaborato:	Rev:
Traversa via De Filippo / Largo Lava del '44 - planimetria impianto regimazione acque e particolari costruttivi		PE-IFO-PL.02	00
		Scala:	varie
00	EMMISSIONE	Dicembre	2017
Rev.	Descrizione		